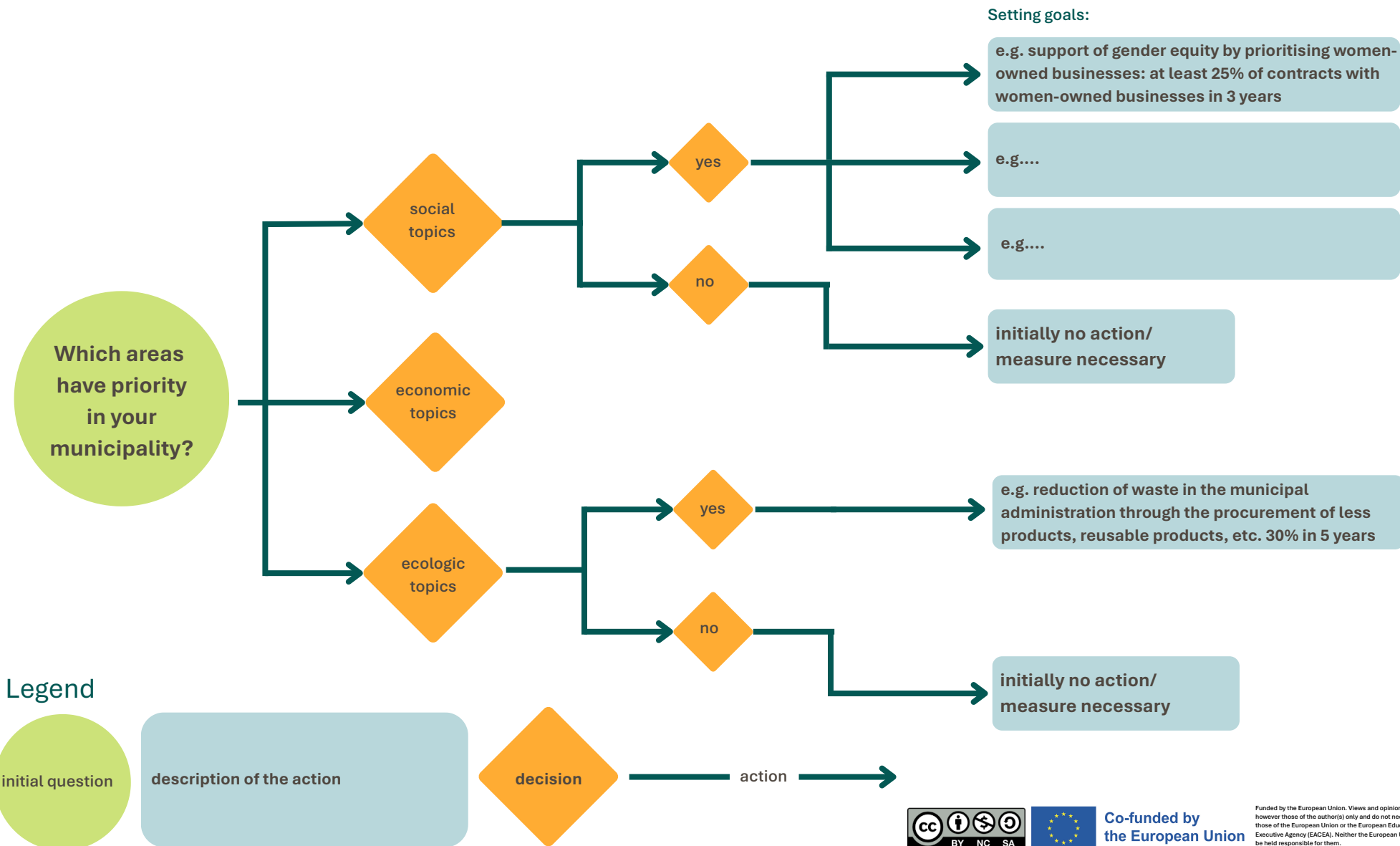


Decision tree

Step 1:

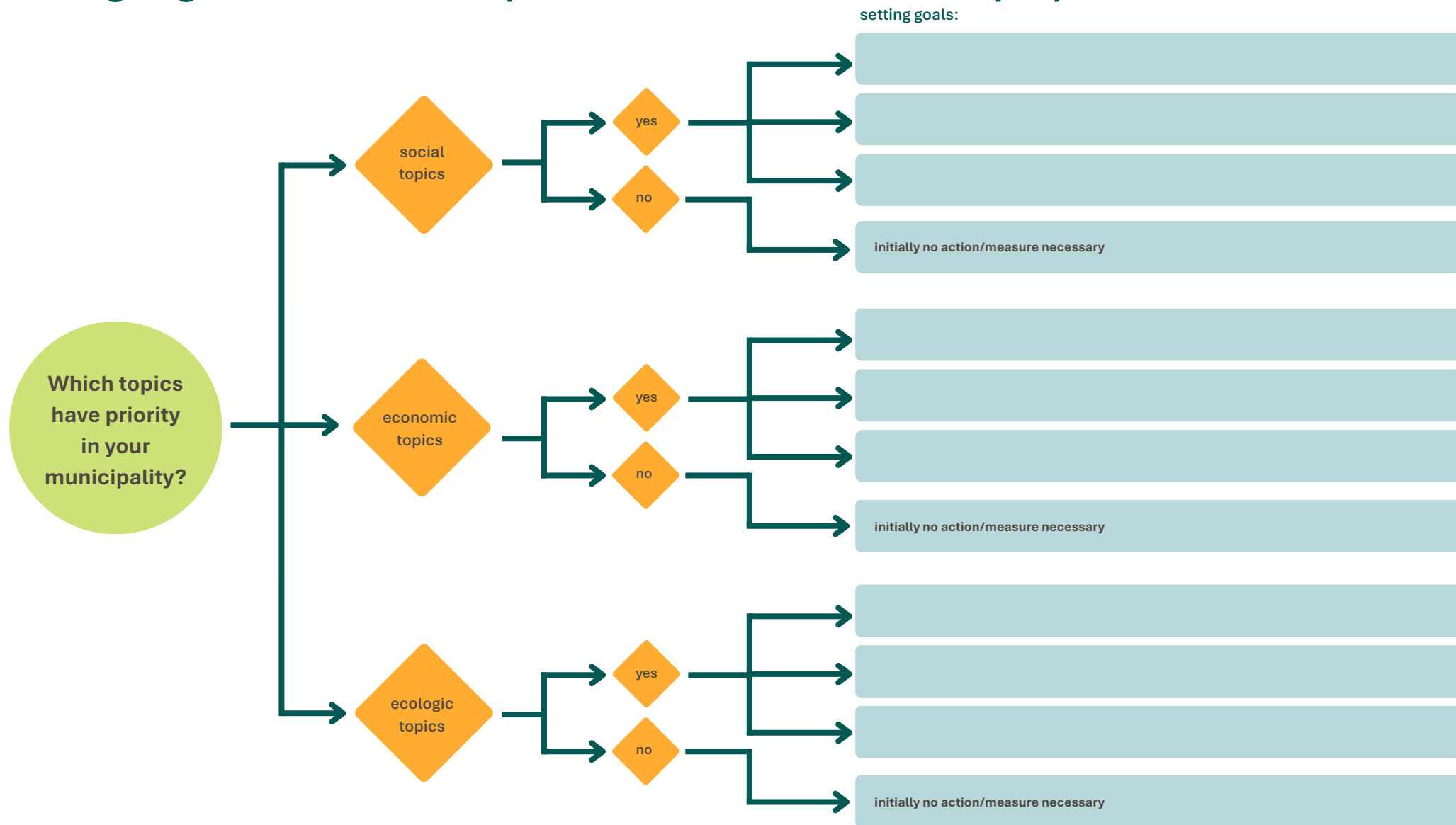
Setting targets for sustainable procurement based on municipal priorities



Decision tree

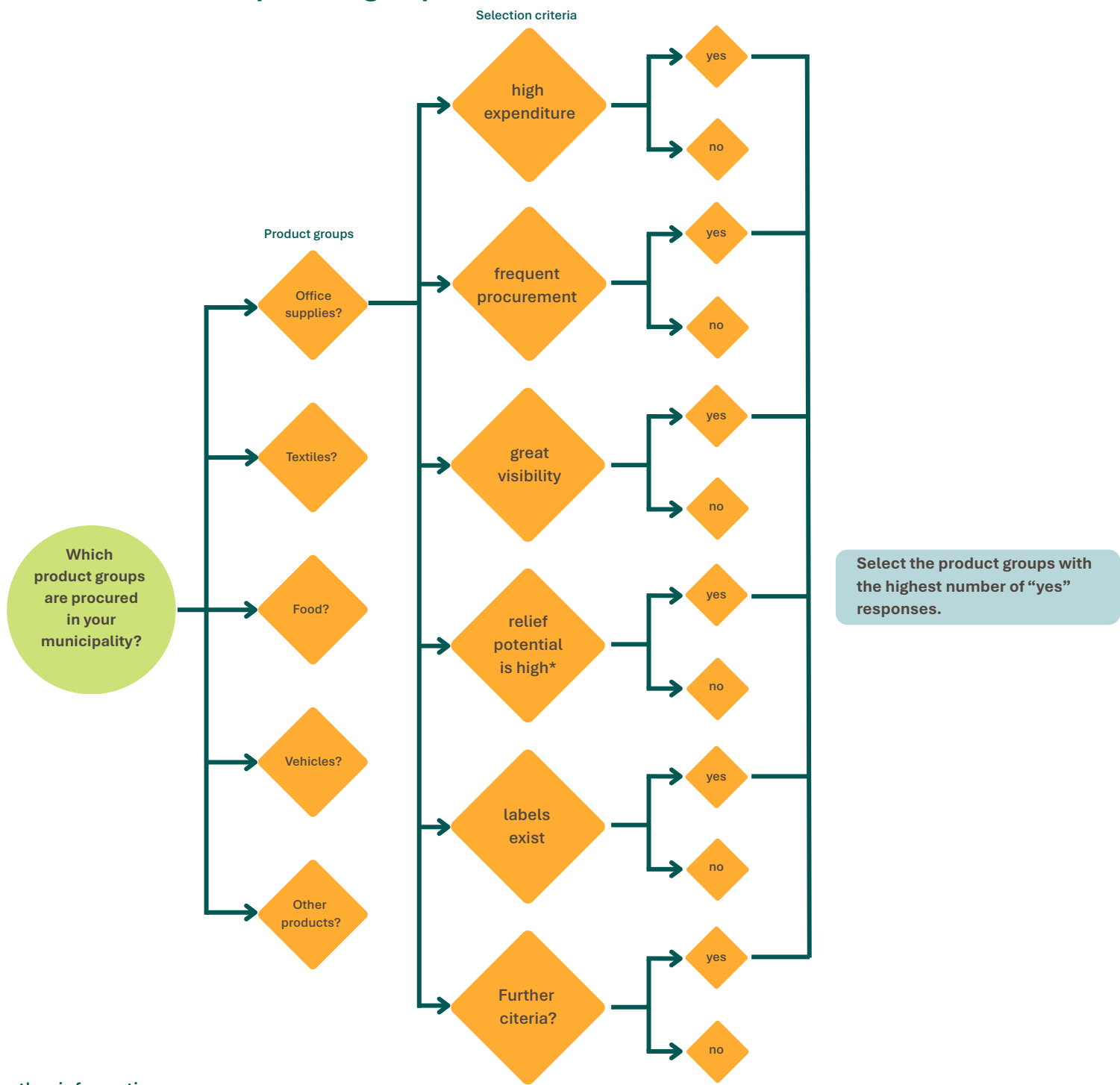
Step 1:

Setting targets for sustainable procurement based on municipal priorities



Decision tree

Step 2: Selection of relevant product groups



Further information:
 *relief potential is high: The use of criteria/labels leads to considerable environmental/social improvement.

e.g.: A German municipality with 10.000 inhabitants has an annual paper consumption of approx. 647,500 sheets. If the entire paper requirement is switched from virgin fibre paper to 100% recycled paper, this results in the following savings:
 6 tonnes of wood (100%) - 126,500 litres of water (78%) - 28,500 kWh of energy (68%) - 480 kg CO₂e (15%)

Legend

